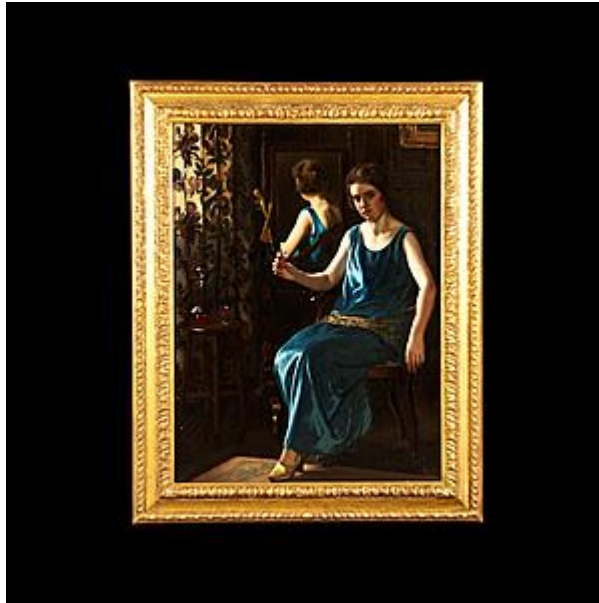


BUTCHOFF

EXCELLENCE IN ANTIQUES

Est.1964



'THE BLUE GIRL' BY STANLEY THOMPSON (B.1876)

Sight Size: | H: 39.5 in / 100 cm | W: 30 in / 75 cm

Oil on canvas, signed and dated 1925.

Depicts a full length portrait of a seated girl in a blue dress, holding a glass of sherry, within an interior scene. Painted in the manner of the Art Deco period.

Provenance:

Stanley Thompson working in Middleton-in-Teesdale, was a pupil of Walter Crane, closely associated with William Morris, and one of the fathers of the Modern British Decorative Art movement, and an exhibitor at the Paris Expositions of 1878, 1889 & 1900. The rear of the picture has the original exhibition, and various labels from the well known framers, James Bourlet & Co.

