



BUTCHOFF
LONDON

XVIII-XIX CENTURY
FURNITURE & DECORATIVE ARTS

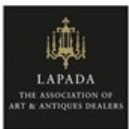


**A SIDE CABINET OF THE FRENCH SECOND
EMPIRE PERIOD IN THE MANNER OF BEFORT
JEUNE**

H: 59 in / 149 cm | W: 54.5 in / 138 cm | D: 22.5 in / 57 cm

8297

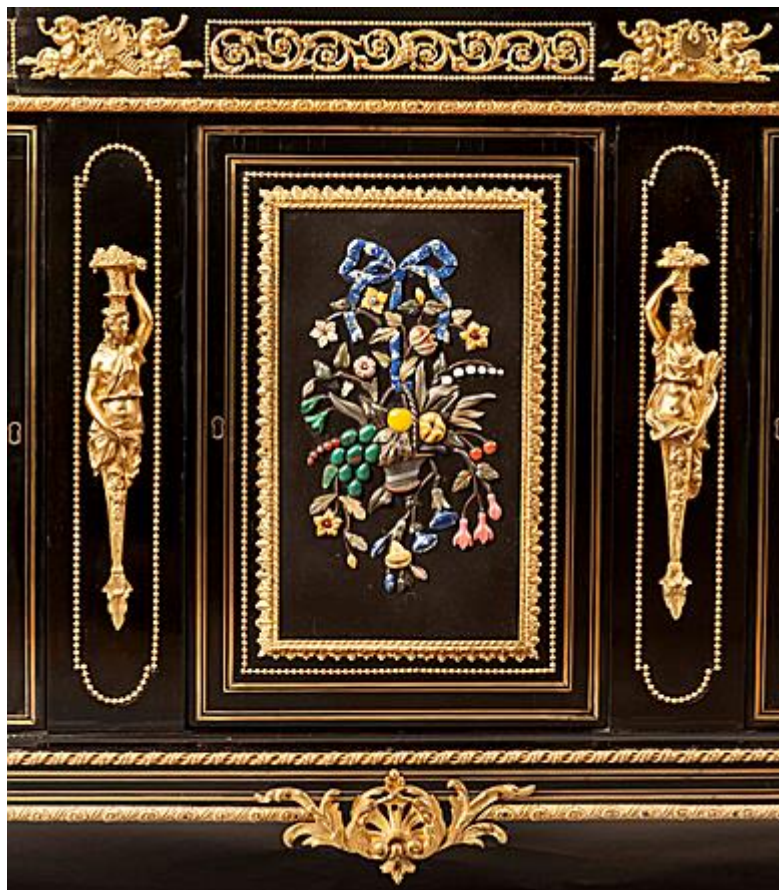
Butchoff Antiques, 154 Kensington Church Street, London, W8 4BN
T: 00 44 (0) 20 7221 8174 info@butchoff.com www.butchoff.com



BUTCHOFF

LONDON

XVIII-XIX CENTURY
FURNITURE & DECORATIVE ARTS



Constructed in bois norç, inlaid with brass fillets, extensively dressed with gilt bronze mounts, and pietra dura panels. Of rectangular form, rising from turned oblate bronze mounted feet, the lower part having three doors enclosing shelved interiors, mounted with rectangular panels depicting detailed floral bouquets in hardstones (including Lapis Lazuli, Yellow Sienna marble and Malachite), interspersed with gilt bronze female caryatids, and flanked by torsade columns wrapped with spirals of a 'running pearl' form; three drawers in the apron, conformingly bronze mounted; the platform having arced everted angles, adorned with a running ovolo bronze mount; the upper part having a mirror backed open centre, flanked by cupboards, with shelved interiors, and decorated with bronze enclosed elliptical hardstone panels and further caryatids; dressed with three-quarter arcaded bronze galleries. French, Circa 1850

Literature:

Denise Ledoux-Lebard, *Le mobilier français du XIXe siècle, 1795-1889 : dictionnaire des ébénistes et des menuisiers*, Paris: Éditions de l'amateur, 2000; pp 47-48 (cf illus. p 49 for a similar hardstone



BUTCHOFF

LONDON

XVIII-XIX CENTURY
FURNITURE & DECORATIVE ARTS

inlay).