



BUTCHOFF
LONDON

XVIII-XIX CENTURY
FURNITURE & DECORATIVE ARTS



A PAIR OF GEORGE II STYLE MIRRORS

Dimensions: H: 48.5 in / 122 cm | W: 23.5 in / 59 cm

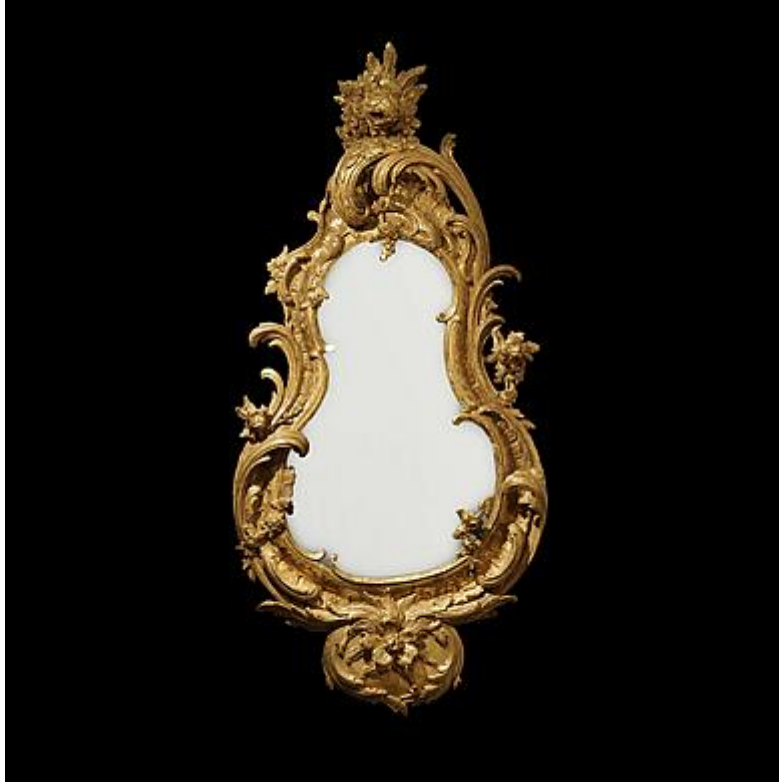
9325

Butchoff Antiques, 154 Kensington Church Street, London, W8 4BN
T: 00 44 (0) 20 7221 8174 info@butchoff.com www.butchoff.com



BUTCHOFF
LONDON

XVIII-XIX CENTURY
FURNITURE & DECORATIVE ARTS



A Pair of George II Style Mirrors

Constructed in carved giltwood, the waisted teardrop shaped mercury plates housed within asymmetrical conforming frames in the George II manner richly carved with scrolling foliates and flowering branchwork; adorned with a floral crest and a relief carved flower pendant cartouche below.

Circa 1860