



BUTCHOFF
LONDON

XVIII-XIX CENTURY
FURNITURE & DECORATIVE ARTS



**A CARVED ALABASTER FIGURE BY EMILIO
FIASCHI OF FLORENCE**

Dimensions: H: 31.5 in / 80 cm | W: 9 in / 23 cm | D: 8.5 in / 22 cm

9989

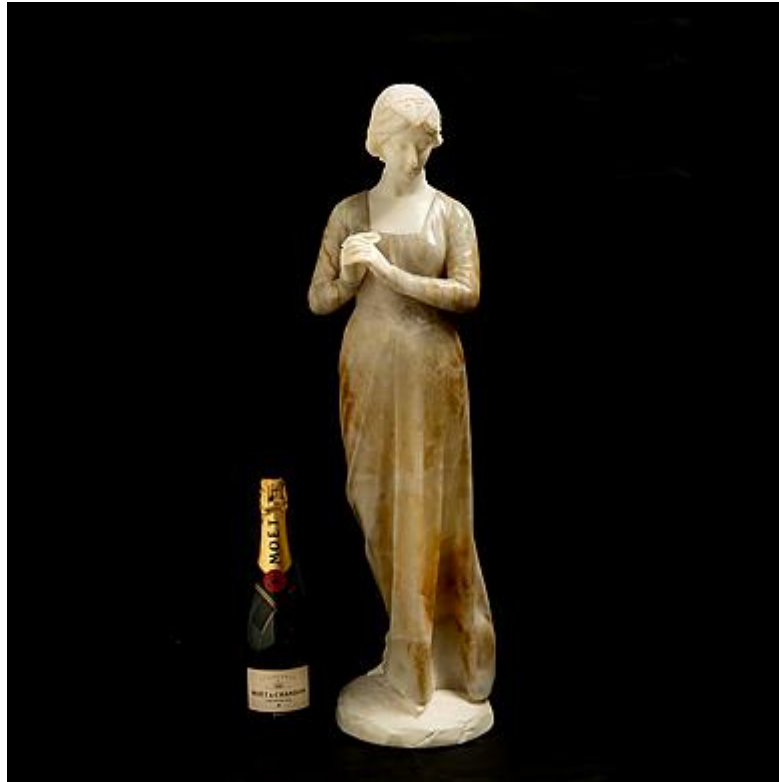
Butchoff Antiques, 154 Kensington Church Street, London, W8 4BN
T: 00 44 (0) 20 7221 8174 info@butchoff.com www.butchoff.com



BUTCHOFF

LONDON

XVIII-XIX CENTURY
FURNITURE & DECORATIVE ARTS



This Italian alabaster sculpture by Fiaschi displays his skillful mastery by accentuating the grace of the female form through the subtle highlighting of the waistline. Meanwhile, juxtaposed with the flowing variegated alabaster dress, the soft, polished texture of the skin becomes all the more captivating. Signed on the base "E. Fiaschi"

Italian, circa 1890

Literature:

Emilio Fiaschi (1858-1941)

Fiaschi belonged to a distinguished group of marble sculptors operating in Florence during the late 19th century. His focus primarily centred on genre themes and the depiction of the human nude, consistently delivering high-quality marble creations.

He trained at the Accademia di Belle Arti in Florence from 1883 to 1885. Fiaschi's talent and dedication were duly recognized when he received a medal at an art competition, held in what is presumed to be his hometown, Volterra, in the year 1890.